

Roden 621 1/32 (na zamówienie) Gnome Monosoupape 9B



Cena :

64,00 PLN

Producent : **Roden (Ukraine)**

Dostępność : **Na zamówienie (Oczekiwanie: 3~7 dni)**

Stan magazynowy : **bardzo wysoki**

Średnia ocena : **brak recenzji**

On individual order

Roden 621 Gnome Monosoupape 9B (1:32) Silnik lotniczy z I wojny światowej

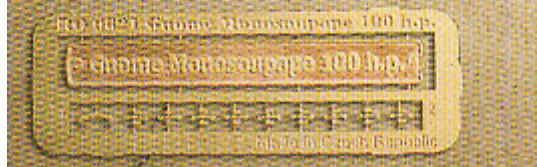
Zestaw zawiera bardzo dokładny model plastikowy do sklepania. Zestaw zawiera elementy fototrawione oraz podstawkę umożliwiającą wyeksponowanie gotowego modelu. Składanie ułatwia bardzo czytelna, obrazkowa instrukcja.

Uwaga: zestaw nie zawiera kleju i farb.

Producent: **Roden** (Ukraina)

The Gnome Monosoupape (French for 'single-valve') was an air-cooled rotary engine designed by Seguin brothers and first introduced in 1913. It used a clever arrangement of internal transfer ports and a single valve to replace a large number of moving parts found on more conventional rotary engines, and made the Monosoupape engines some of the most reliable of the era. British aircraft designer Thomas Sopwith described the Monosoupape as 'one of the greatest single advances in aviation'. The Gnome Monosoupape was used by a number of Allied aircraft during the WWI (Airco DH2, Bristol Scout, Bristol TB.8, Morane-Saulnier A1, Nieuport 28, R.A.F F.E.8, Sopwith Camel, Sopwith Pup (early), Sopwith Two-Seat Scout, Vickers F.B.5, Vickers F.B.19, etc).

Photoetch is included





The Gnome Monosoupape (French for single valve) was an air-cooled rotary engine designed by Seguin brothers and first introduced in 1913, it used a clever arrangement of internal transfer ports and a single valve to replace a large number of moving parts found on more conventional rotary engines, and made the Monosoupape engines some of the most reliable of the era. British aircraft designer Thomas Sopwith described the Monosoupape as 'one of the greatest single advances in aviation'. The Gnome Monosoupape was used by a number of Allied aircraft during the WWI (Alco EB2, Bristol Scout, Bristol TB.8, Morane Saulnier A1, Nieuport 28, S.A.F. F.5.B, Sopwith Camel, Sopwith Pup (early), Sopwith Two-Seat Scout, Vickers F.B.5, Vickers F.B.13, etc.).



Photoetch is included



World War I

1:32
 1/32nd Scale
 Roden Model Kit

Gnome Monosoupape 9B No 621

French WWI air-cooled rotary engine