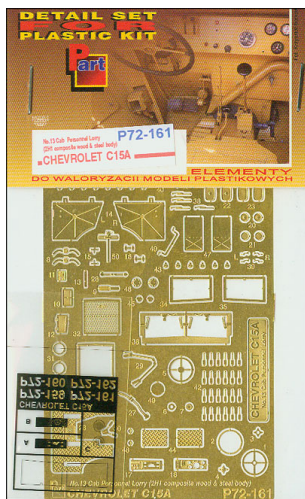


Part P72-161 1/72 Chevrolet C.15A No.13 Cab (IBG 72013)



Cena :

38,00 PLN

Producent : **Part (Poland)**

Dostępność : **Jest**

Stan magazynowy : **bardzo wysoki**

Średnia ocena : **brak recenzji**

Part P72161 Chevrolet C.15A No.13 Cab Personnel Lorry (2H1 composite wood & steel body) (1/72)

*Najwyższej jakości elementy fototrawione do modeli firmy **IBG Models 72013***

Zestaw zawiera:

- 1 arkusz blaszki miedzianej
- film z szybą
- szczegółową instrukcję składania

Producent: **PART** (Polska)

**DETAIL SET
FOR
PLASTIC KIT**

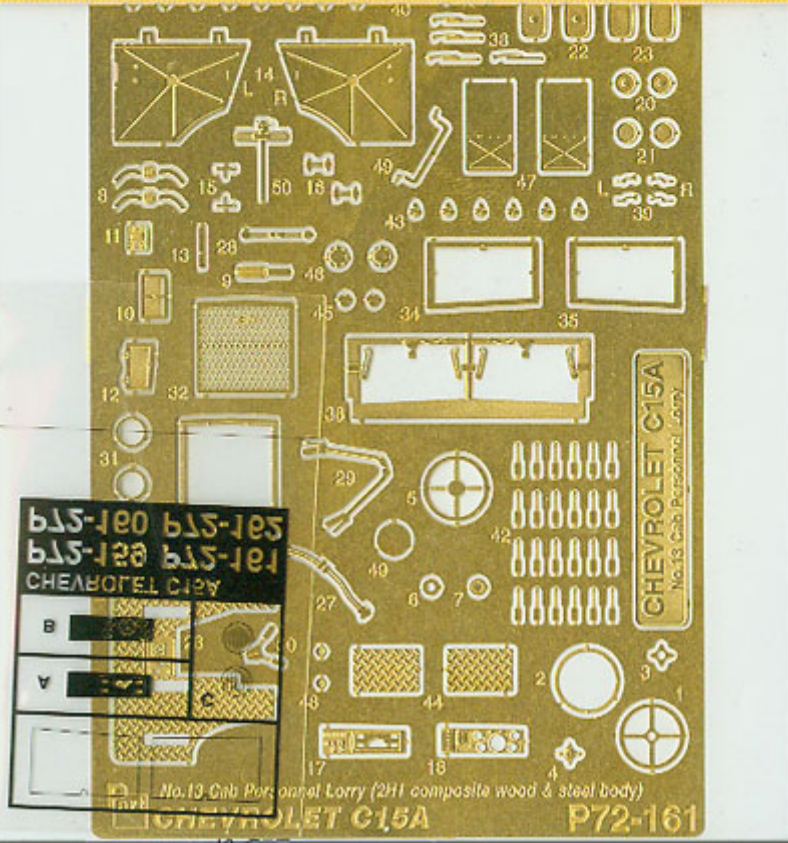
Part

MODEL
C15A

No.13 Cab Personnel Lorry
(2H1 composite wood & steel body)
CHEVROLET C15A

P72-161

**ELEMENTY
DO WALORYZACII MODELI PLASTIKOWYCH**

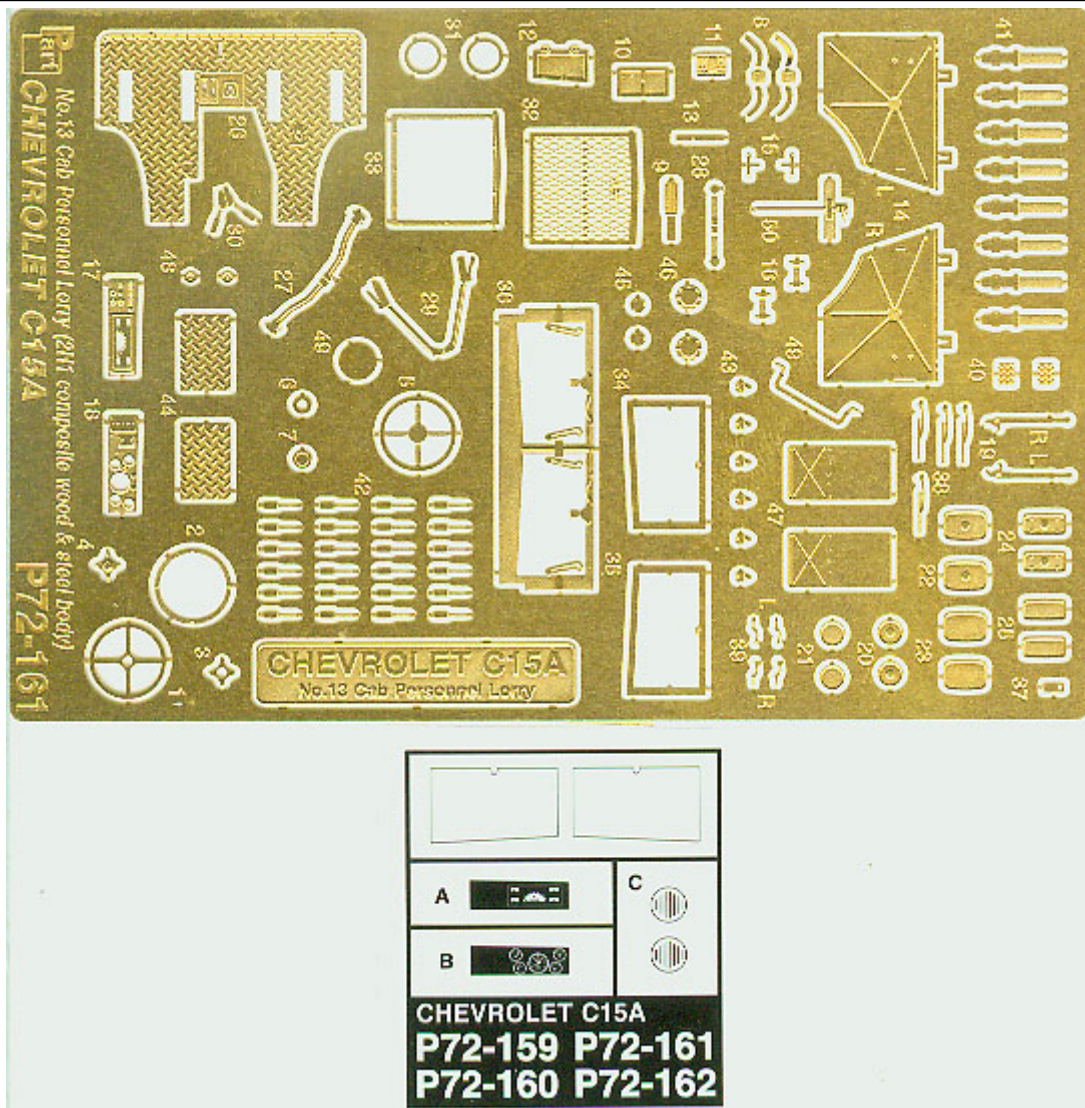


b15-100 b15-105
b15-120 b15-101
CHEVROLET C15A

CHEVROLET C15A
No.13 Cab Personnel Lorry

No.13 Cab Personnel Lorry (2H1 composite wood & steel body)
CHEVROLET C15A **P72-161**

Pol. Krajowa



Part

ELEMENTY FOTOTRAWIONE
DO MODELI PLASTIKOWYCH

P72-161

CHEVROLET C15A

No.13 Cab Personnel Lorry (2H1 composite wood & steel body)

DETAIL SET FOR PLASTIC KIT
"Part" (0-42) 640-40-76
www.part.pl

1:72 scale detail set for IBG MODELS kit

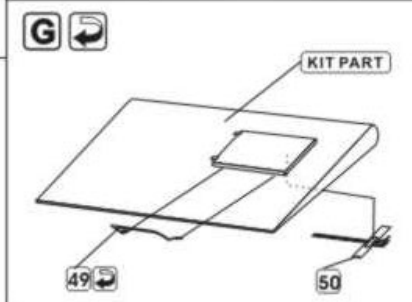
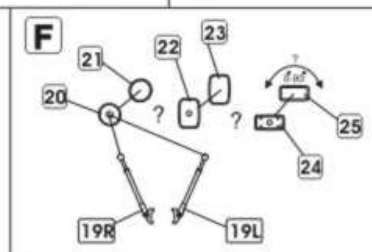
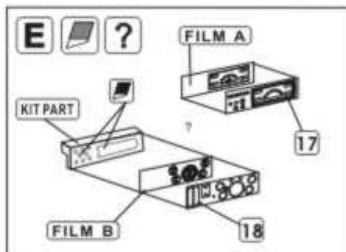
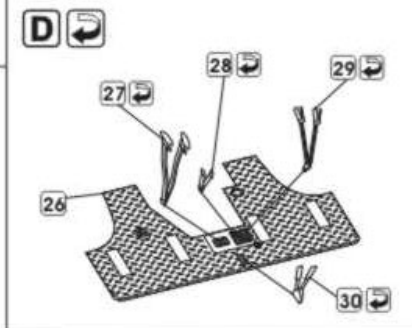
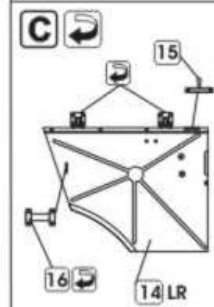
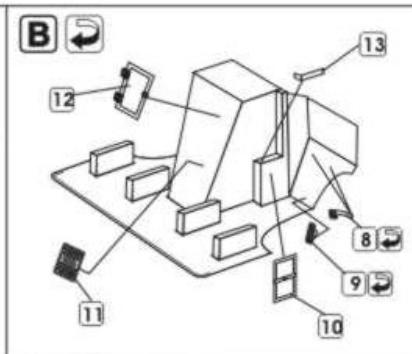
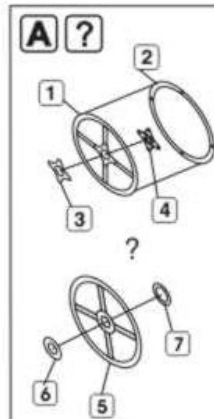
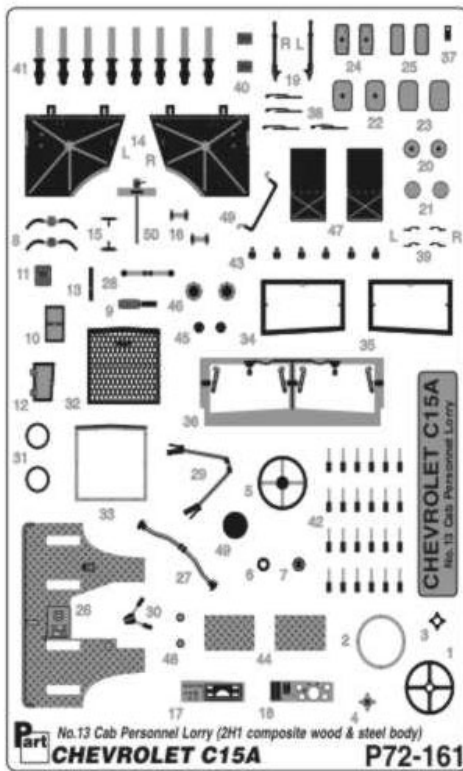
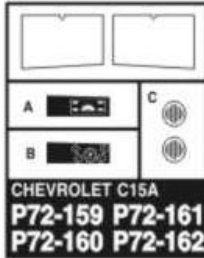
PO DRUGIEJ STRONIE
OPPOSITE SIDE

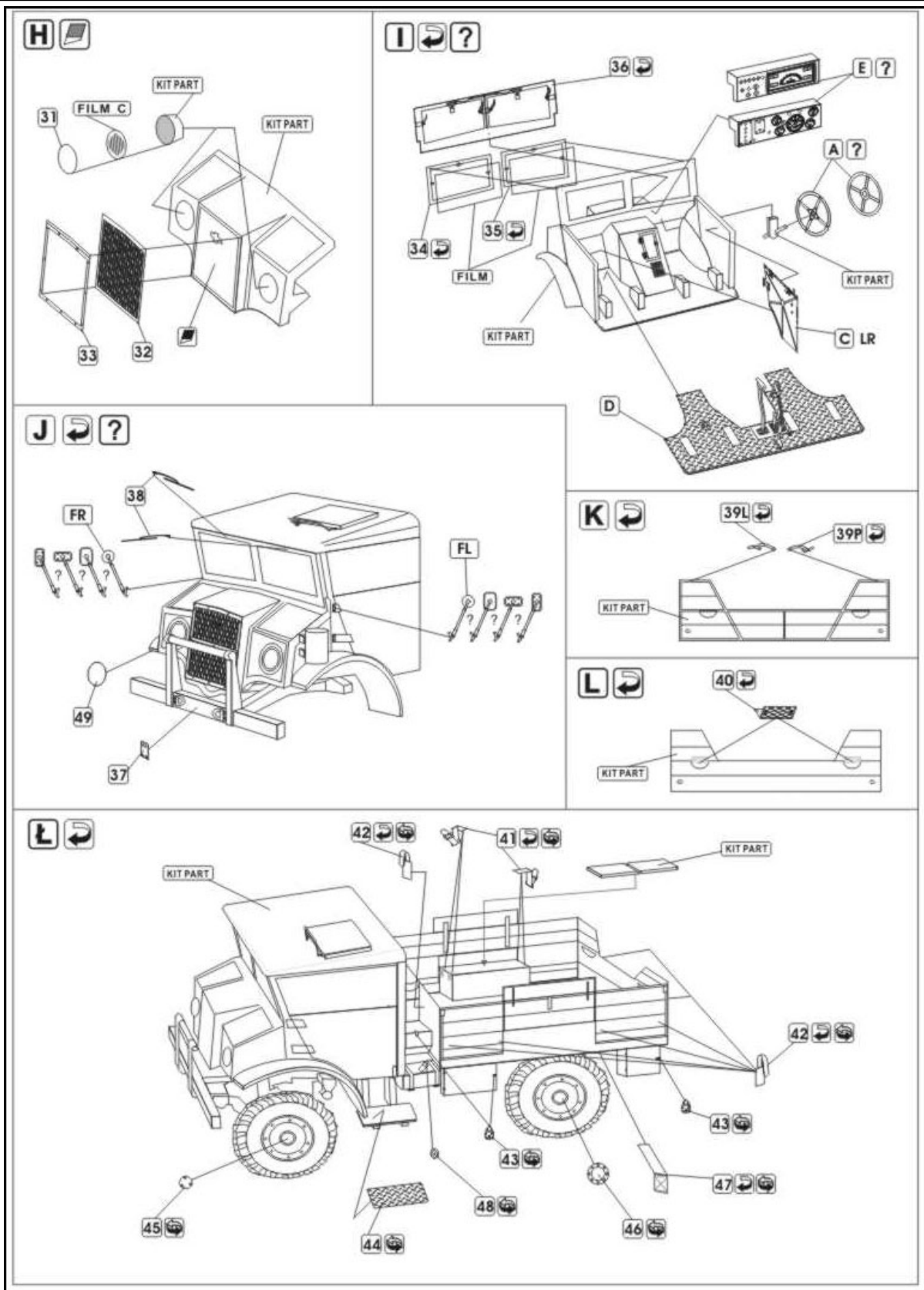
ODCIAĆ
REMOVE

ZAGIĄĆ
BEND

DO WYBORU
OPTIONAL

TŁOCZYĆ
PRES





Sklep modelarski Jadar-Model. PART - Elementy waloryzujące do modeli plastikowych - PART Polska.