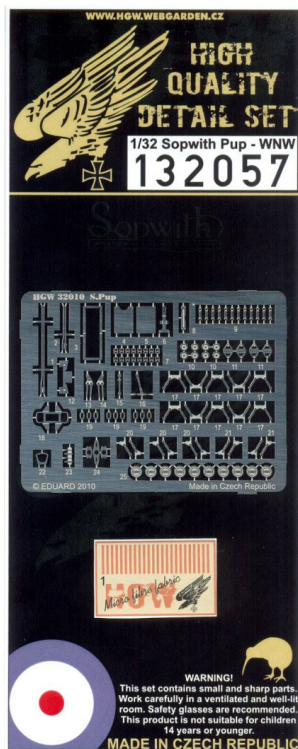


HGW 132057 1/32 (na zamówienie) Sopwith Pup (Wingnut Wings)**Cena :****41,00 PLN**Producent : **HGW**Dostępność : **Na zamówienie (Oczekiwanie: 2-4 tygodnie)**Stan magazynowy : **bardzo wysoki**Średnia ocena : **brak recenzji****On individual order****HGW 132057 Sopwith Pup (1/32)**Zestaw elementów fototrawionych do modeli plastikowych **Wingnut Wings**. Skala 1/32Producent: **HGW** (Czechy)

WWW.HGW.WEBGARDEN.CZ

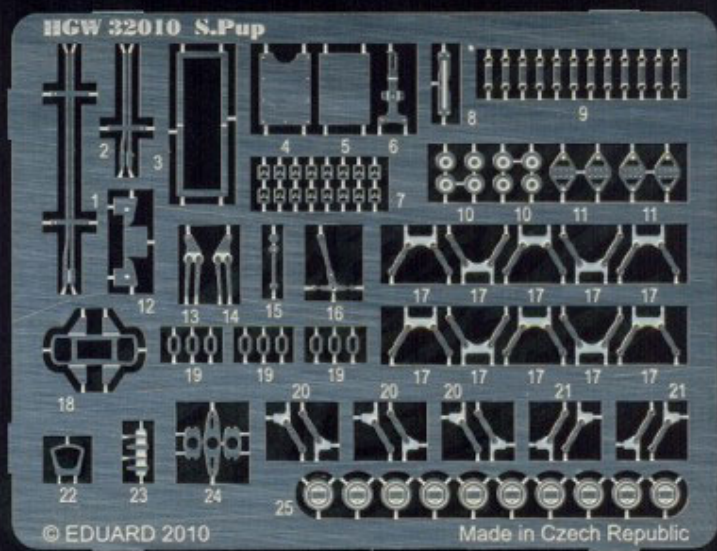


HIGH QUALITY DETAIL SET

1/32 Sopwith Pup - WNW

132057

Sopwith




WARNING!

This set contains small and sharp parts. Work carefully in a ventilated and well-lit room. Safety glasses are recommended. This product is not suitable for children 14 years or younger.

MADE IN CZECH REPUBLIC

32010 SOPWITH PUP



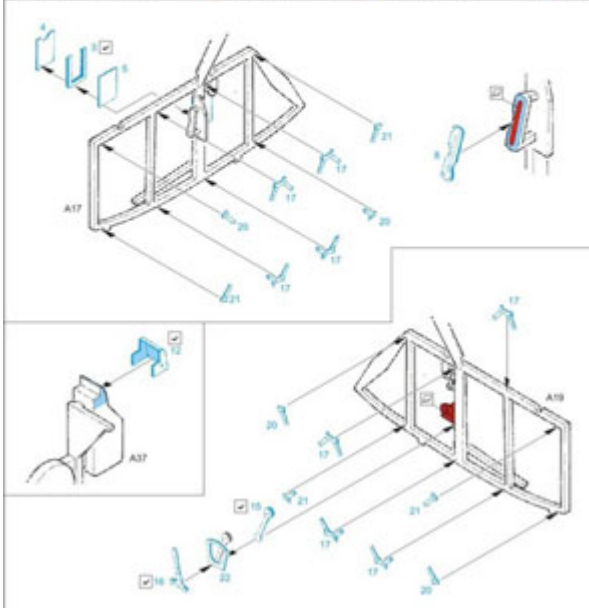
HGW
www.hgw.webgarden.cz
www.hgw-czech.cz

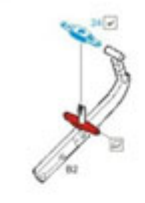
APPLY EXCESS ADHESIVE AND TRIM EXCESS USING
 FINELY GRAINED BRUSH IMMEDIATELY AFTER GLUING
 OF METAL PARTS TO PREVENT CORROSION
 OF METAL PARTS
 REPAIRS
 CORROSION
 CRACKS
 WEAR
 SMALL HOLES
 SAND PAPER

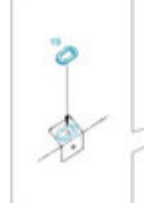
BRUSH
 CLEANUP
 OPTION
 PHASE
 REPLACE
 REPAIRS

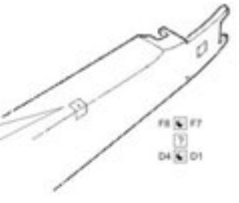
ORIGINAL KIT PARTS
PHOTO-ETCHED PARTS
PARTS TO BE REMOVED
FILL TABS/LIT

PUVODNÍ DÍLY SADA
 LEPTANÉ DÍLY
 DÍLY K ODBRÁNÍ
 PLYNĚNÍ









8 pcs

Monocoque part

